



INDUSTRIAL SERVICES





SIDERPLUS

Siderplus is the engineering company & Consulting Group Finsea, constituted by combining a common factor the consolidated experience of a team of experts from excellent professional paths.

Siderplus, in fact, relies on the competence and professionalism of qualified technicians who have worked, even as consultants on behalf of companies such as Danieli, Center Combustion, Ansaldo, Ilva, Italmimpianti Severstal, Techint, Gavazzi, Paul Wurth, Tractebel Engineering GDF, Eni Snamprogetti, LyondellBasell, Fenice and the like, in yards situated in every part of the world.

OUR ACTIVITIES

BASIC AND DETAIL ENGINEERING

Z



SPECIALIZED SECTIONS:

- EVALUATION COST / TENDERS
- MANAGEMENT AND CONTROL PROJECT
- PROCESS
- GENERAL PLANT
- PIPING & LAY-OUT - 3D MODELING
- BUILDING WORKS / UNDERGROUND
- CARPENTRIES AND STRESS ANALYSIS
- ELECTRO-INSTRUMENTAL / AUTOMATION
- MACHINES / EQUIPMENT

The experience matured in the context of industrial engineering and business strength of a group of companies supported by holding **Finsea srl**, have enabled us to achieve significant results on the national and international market.

CONSULTING



SUPPORT FOR ACTIVITIES:

- EXPEDITING AND COSTRUCTIONS
- SUPERVISION MONTAGES
- PRE-COMMISSIONING
- COMMISSIONING
- START-UP SYSTEM
- ACHIEVING TARGET PRODUCTION
- O&M
- STAFF TRAINING
- SECURITY

Siderplus, moreover, works together the **Serveco srl**, the leader company of the group **Finsea**, in the development of the design activities necessary for the construction of the installations and services requested by customers.



FINSEA GROUP

Finsea Srl is a holding company at the head of an integrated pool of societies operating in the sectors of the environment, energy, energy saving and technological innovation.

The Group has today a global turnover of about 40 million Euro and a total workforce of 415 employees, including 45 engineers. The Finsea is composed of 14 companies with great experience in their working sectors.



WHY CHOOSE SIDERPLUS

Siderplus is able to provide its customers with a global service (design activities, assistance to the construction, transportation, erection supervision, commissioning, training and management) for industrial plants in areas steel, Ilo & gas and energy production and transport installations, storage, treatment, recovery and valorisation of waste.

The technical support to the customer is articulated through the different phases of the project (identification and definition of the objectives, the development of the basic engineering, budgeting, technical management and contractual) with specialised units in the heads of engineering and consulting.

Enthusiastic of our work we offer highly innovative solutions and effective. Our structure provides specific team of design for every project and it works in hold cooperation with customers from the planning phase of the activities to the delivery stage, in accordance with regulations existing national and international and technical standards of project.

We are convinced that it's important to have solid performance in areas QHSE and it represents a fundamental strategy for the business when we operate in a competitive market.

The experience gained by working for many companies in different countries of the world and the ability to transfer effectively the know-how are the key factors of Siderplus that allow the customer to obtain a facilities management of success. Our priority is to provide the customer with the highest level of staff training through lessons and practical exercises on the plants, ensuring, moreover, respect and the transposition of all legislation relating to the protection and safety at work.

INDUSTRIAL PLANTS

Our references in the industrial sector range from steel sector to steelworks at integral cycle or electrical, to installations for the production energy for thermoelectric plants, cogeneration and trigeneration, to petrochemical plants and oil & Gas and waste treatment.



IRON AND STEEL PLANTS



PLANT POWER GENERATION



OIL & GAS



WASTE TREATMENT PLANTS

REFERENCES

The quality of the performance is guaranteed by the experience reached with successful projects in Italy and abroad:



PAUL WURTH



GE imagination at work



Saipem

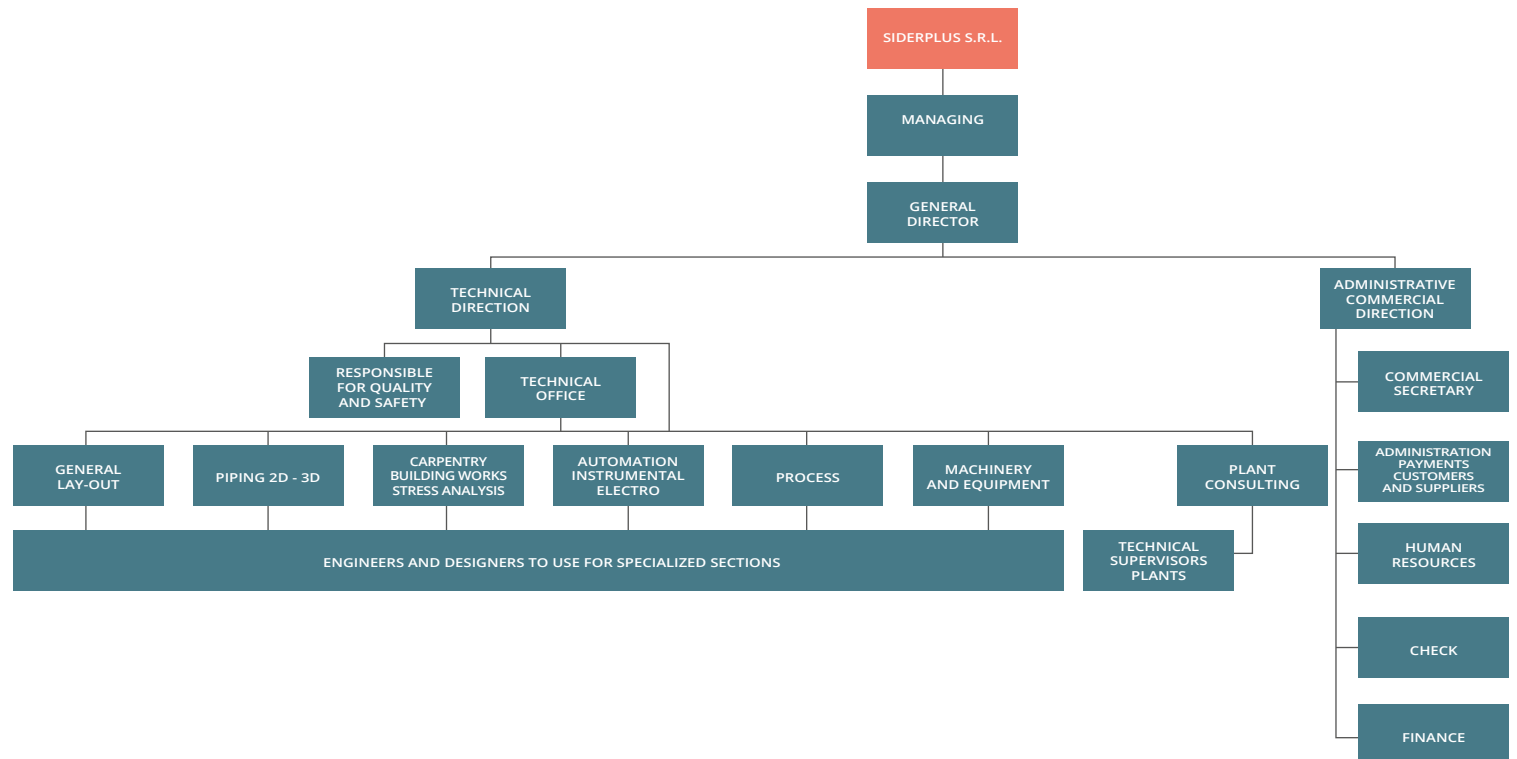


“ We put our professional skills at the disposal of the client, guaranteeing effective solutions and visibility. ”

COMPANY STRUCTURAL ORGANIZATION

The organizational structure of Siderplus Srl is constituted through the development of processes, whose engineering activities are conducted by teams selected with vertical specialization and technical skills standards. By sharing objectives and combining the efforts, all works

are entrusted to the responsibility and supervision of the technical direction. The objective is to optimize performances and tasks in each planning and execution area and to achieve the result or service requested by the customer.



HARDWARE AND SOFTWARE

Our structure uses specialized hardware and software in continuous updating, to follow the step of projects with complex and multidisciplinary approaches.

● HARDWARE LIST


- No. 9 Desktop Processors (i7 - video card 2GB - RAM 8GB)
- No. 3 Notebook Computers
- Plotter (Martina Franca - HP 500 to -A0-42")
- Laser multifunction printer with scanner and fax network (Martina Franca)
- Video projector (Martina Franca)
- UPS 6000VA (Martina Franca)
- NAS with RAID system (Martina Franca)
- Unix Server (Martina Franca)
- Unix Server Management Daily Backup with RAID 5 (Montemesola)
- VPN connection between the two seats with n.2 HDSL from 2 Mb balanced
- HDSL 10 Mb with 6 MB minimum guaranteed bandwidth (Martina Franca)
- Telephone switchboard Avay Digital

● SOFTWARE LIST

- Microsoft licensing office 2013
- Caesar II (v. 07.00.00.2800)
- Licenses Autodesk Autocad 2014
- Autodesk Inventor 2013
- Microsoft project 2010




STRATEGIC PARTNERS

We collaborate with companies of the R&D sector of Finsea Group and other public and private companies. We have concluded partnership, agreements and strategic alliances to develop research and specialistic activities such as:

PARTNER	AREA OF COOPERATION
	<p>Design electro-instrumental, realization and management of energy efficiency initiatives (electric motors with high efficiency; co-trigeneration; energy efficient lighting; thermal insulation of buildings).</p> <p>Design, realization and management of plant that use renewable sources of energy (photovoltaic, solar thermal; wind energy; biomass; geothermal energy).</p> <p>Energy audits and the energy certification of buildings.</p> <p>Planning, Realization and management treatment plant and waste storage.</p> <p>Planning, Realization and management plant wastewater treatment.</p> <p>Design and construction land reclamation, decommissioning and safety.</p>

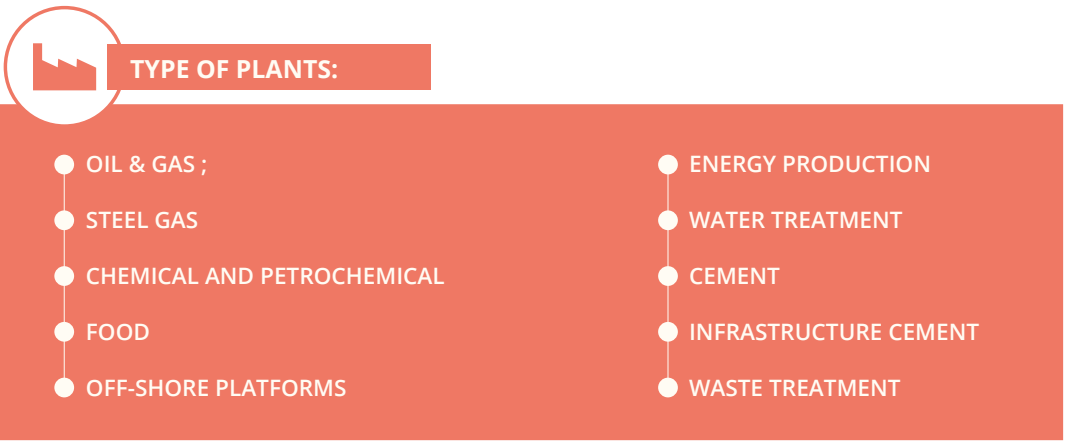
PARTNER	AREA OF COOPERATION
	<p>Environmental consulting service for companies.</p> <p>Training and informaton staff.</p> <p>Technical advice and administrative assistance for access to facilities and funding.</p> <p>Management tell authorization procedures (S.C.I.A., V.I.A., U.T.F., etc.).</p>
	<p>Consulting for safety and safeguard at work.</p> <p>Consulting on accident prevention regulations and measures of prevention and protection.</p> <p>Measurement of the sound, light, climate and vibration.</p> <p>Assessment of environmental pollutants interiors and exteriors.</p> <p>Training of employers and workers in the field of accident prevention (risks, fire, first aid).</p>



PARTNER	AREA OF COOPERATION
	<p>Design and production of systems for the control, optimization and intelligent management of the energy which find application on utilities such as lifts, machine tools, presses, ecc.</p>
	<p>Lighting design, development, production and marketing of a flexible range of solid state LED lamps.</p>
	<p>Design and manufacture of advanced solutions and high reliability in technological sectors such as the domotics, mechatronics and applications for mobile robotics.</p>

PARTNER	AREA OF COOPERATION
	<p>Training and technological development, especially for environmental issues, with the help of research laboratories and service for the surveys, sampling and analysis of environmental matrices.</p>
	<p>Development of new environmentally friendly technologies, reclamation projects and remediation of soil, surface water and groundwater polluted and purification and reuse of civil and industrial wastewater, also with the aid of laboratory services for testing and analysis necessary for the development and validation of the project.</p>
	<p>Experimental research on topics related to performance, control and to the environmental impact of Industrial installations and energy systems.</p>

SECTORS AND SPHERES OF COMPETENCE



The structure of the Siderplus dedicated to training project identifies the roles and different needed skills to carry out every task.

The Group has 10 design specialists who engage 20.000 hours each year for the realization of industrial products that meet optimally explicit requirements, 10 supervisors in the field of consulting who engage 20.000 hours each year for consultancy and support activities in the field and finally 10 specialists in outsourcing of design who engage 20.000 hours each year. The design industry is composed of a group of experts highly qualified and responsible of the following *specialized units*:

- Management and control project
- Process (only mechanization P&ID)
- General Plant
- Piping & lay-out / 3D Modeling
- Building Works / underground
- Carpentries and stress analysis
- Electro-Instrumental
- Automation
- Machinery and Equipment

DESIGNER MANIFATURERS



PIPING



PROCESS AND AUTOMATION



DESIGNERS



CONSULTING



GENERAL PLANT DESIGN

SERVICE	ACTIVITY
Plant engineering and process	Studies of basic engineering, feasibility, dimensioning, simulations, processing of the data sheet, drafting process schemes specific to line, studies of revamping or improvements, choice and sizing of the equipment, alignment offers, expediting. Execution of the lay-out, plant disposal apparatuses, 3D models, definition tie-in, plants pipes with views and details, media definition, stress analysis, emission of the isometric and definition of the spool for the prefabrication and assembly, MTO, definition painting and insulation, planning of the CND, circuits for the hydraulic test specifications for contracts, computations, cost estimates, technical assistance work.
Engineering structural mechanics	Topographic surveys, studies for foundations, construction drawings of maximum and detail, architectural design, structural calculation, computations, cost estimates, specifications for contracts, plans of lifting, disassembly and demolition, technical assistance to work.
Engineering Electro instrumental	Analysis on customer specifications, feasibility studies, basic design and execution, analysis of the costs and cost estimates, elaboration of technical specifications and purchase requisitions materials, technical management of subcontracts, emission data sheet of purchase, wiring diagrams of assembly, assistance and technical supervision to the assembly, assistance and supervision to the testing and startup.
Engineering technologies and systems of evaluation	The main activities concern the study of the interrelations between materials, theoretical and experimental study of plant engineering systems and conventional and innovative, treatment processes and machining, the planning, design and optimization of production processes and conventional and non-conventional analytical techniques, numerical and experimental, integration CAD/CAM.

ENGINEERING FOR MACHINES IN THE STEEL SECTOR

The activities of basic and detail engineering provided within the framework of steel production are the following:

- Machines of transport and automatic movement for slabs, billets, coils, pipes, round, wire rod
- Roller ways
- Walking Beam, transfer trucks, tilters
- Chain conveyors, plaques of loading/unloading, conveyor belts
- Trucks weighing process and tax
- Transfer to lever and rotating arms
- Machines casting process continues (segments, tundish wagons, ladle Tower, track rollers of evacuation, baskets recovery false slab)
- Heating furnaces with longitudinal members, heating furnaces to tunnel
- Revamping for change, improvement, modernization of existing machines for rolling mills, tubes, continuous casting
- Insulated cabins for operator station and for housing machines and instrumentation for on-line quality control
- Fixed structures and furniture for encapsulation machines and operator protection shield



CONSULTING ACTIVITIES

To request this service ensures the physiological completion of a project entrusted to SIDERPLUS. The activities supplied concern:

- Support for engineering and supervision in the construction phase
- Pre-commissioning
- Commissioning
- Start-up
- Assistance for the exercise for the achievement of the target of production plant
- Personnel training or&M
- Safety



SIDERPLUS, therefore, is able to ensure the completion of the engineering activity until the delivery of the plant in gear.

On request it is possible to provide technicians to call for specific activities in all parts of the world.

Also, the consolidated experience of highly qualified personnel in the context of the iron and steel industry, allows interventions on:

- Mills
- Trains sheets
- Long mills
- Cold mills
- Tubes
- Blast Furnaces
- Continuous casting plants
- Electric steelworks
- Steelworks at integral cycle

OUTSOURCING ACTIVITIES

Specialized tasks entrusted to out-sourcing to engineering company in partnership:

- Calculations pressure equipment and atm
- Automation project
- Electric Project bt / MT and instrumental
- Check the completed items

MAIN PROJECTS

The list of the main projects completed by Siderplus:

● Petrochemical plants, oil & gas:

- Company: **ENICHEM**
Project: Plant "MDI" - Zone Phosgene
- Company: **AVTOVAZ RUSSIA** - Establishment of Togliatti Grad
Project: New Central Air Compressors 13bar / 7bar
- Company: **TECNIMONT** - Milano
Project: Dedusting "Plant HD/LDPE ALJUBAIL EPC TASNEE"
- Company: **MONTELL**
Project: Plant "MP1" Catalloy Europe (Holland)
- Company: **MONTELL** Establishment of Terni
Project: Revamping plant "PP1" for new extrusion
- Company: **EDISON** (ex ISE) - Taranto
Project: Verification Stress Analysis steam manifolds MB3
- Company: **SNAM PROGETTI** Sud
Project: LAB-COMPLEX IRAN
- Company: **EPAFLEX** - Rostov (Russia)
Project: Mechanical Design-plant production plant of the TPU (thermoplastic polyurethane) RT-EPAFLEX

● Energy production plant (thermal power plants, cogeneration, trigeneration):

- Company: **FIAT**
Project: New Cold Pole - Establishment Cassino
- Company: **FIAT**
Project: Revamping of central heating and thermal cycle - Establishment Cassino
- Company: **ECOESPANSO** - Establishment of Santa Croce sull'Arno
Project: The new cogeneration plant 29 MWe - 4 Engines RR
- Company: **FPT** - Establishment of Termoli
Project: Energy vectors T1-T2-T3
- Company: **PASTIFICIO MONTEREGALE** - Establishment of Mondovì
Project: The new cogeneration plant
- Company: **FERRARI** - Maranello factory
Project: New plant of trigeneration 17 MWe - 2 RR engines

● Sector references waste treatment:

- Company: **AMIU SPA** - Taranto
Project: mechanical works and structural measures to the new line of deferizzazione, included the shed for the storage of waste arising from the activities of the incinerator property of the AMIU S.p.A., site to the Via Appia S.S. 7 KM 642 - Statte (TA). Design in support of activities carried out by Serveco Srl.



MAIN PROJECTS

References design in the steel sector:

- Company: **ILVA SPA** - Taranto Plant
Project: New hydraulic winches of reversal for coking department
- Company: **ILVA SPA** - Taranto Plant
Project: Revamping and mechanical modification Walking Beam Coils department FNA-1
- Company: **ILVA SPA** - Taranto Plant
Project: Revamping grinding zone and Walking Beam for pipes 56" department TUL-2
- Company: **ILVA SPA** - Taranto Plant
Project: new lines of welding the outer longitudinal pipes 48" department TUB-1
- Company: **RIVA STEEL** - Stabilimento di Lesegno
Project: Plaque charge transfer and with rotating arms for blooms department LAM
- Company: **RIVA STEEL** - Verona site
Project: fixed structures and furniture for maintenance and operator protection line wire rod department LAM-3
- Company: **RIVA ACIER S.A.** - Establishment Gangerville ALPA - France
Project: cages mechanized guard for encapsulation rolling train department LAM

References for sector consulting:

- Mechanical supervision in production support for the train hot strips, organization of the workshop general; on-site training TSC Metallurgy; Thunnel maintenance furnace, Maintenance E.A.F., L.F., Skin Pass C/O. **Yard of EFS Ain Sohkn**a (Egypt)
- Starting the continuous casting machine; organization of maintenance of the steelworks c/o. **Yard Iron & Steel Co. Xin Yu** (Cina)
- Erection supervision piping the continuous casting machine c/o. **Yard Engineering Steel** (England)
- supervising the mechanical mounting - electrical - LAF piping for billets C/o **Yard Saudi & Iron Steel Co.** (Hadeed - Saudi Arabia)
- Supervision conduction EAF furnace and management: exercise machine for the continuous casting of billets c/o. **Yard Sonasid** (Marocco)
- mechanical supervision - Fluids electrical distribution and drives AC production c/o. **Yard BKV GROUP LLP** (Kazakhstan)
- Supervision of the activities of restarting the blast furnace No.2 and training to staff for **Bhushan Steel Ltd.** (Odisha-India)



Head office:

Zona P.I.P. - Viale delle Imprese, 3
74020 Montemesola (TA) | Italy



Technical office:

Via Mottola, Km 2,200 Z. I. Traversa Vito Consoli
74015 Martina Franca (TA) | Italy



Contact:

Tel. (+39) **099.567 12 00** | VAT: IT02925010734
Fax (+39) **099.567 11 12** | www.siderplus.it - info@siderplus.it